

Re-fronted Kingsclere?

Visitors to Kingsclere would see lovely houses with brick or mortar or plaster fronts. But they would not see that many are half-timbered houses from a much earlier age.

As one of the Conservation Area documents says: “The common palette of materials in the conservation area includes timber-framing, often re-fronted in high quality brick, with lime mortar or lime render.”¹

So here's a sample of what's not seen: Swan Street
Number 1 gives a partial example



1810 full timber



1930 half timber, half plaster



now half timber, half plaster

Chris Watkins 2020

So here's a collection of 26 internal photos that may help:

Let's look first at odd numbers (East side of Swan Street)
Which ones have been re-fronted?



3a Swan Street



¹ Kingsclere Conservation Area Appraisal and Management Plan: Supplementary Planning Document (SPD) 2017



5b Swan Street



9 Swan Street



17 Swan Street

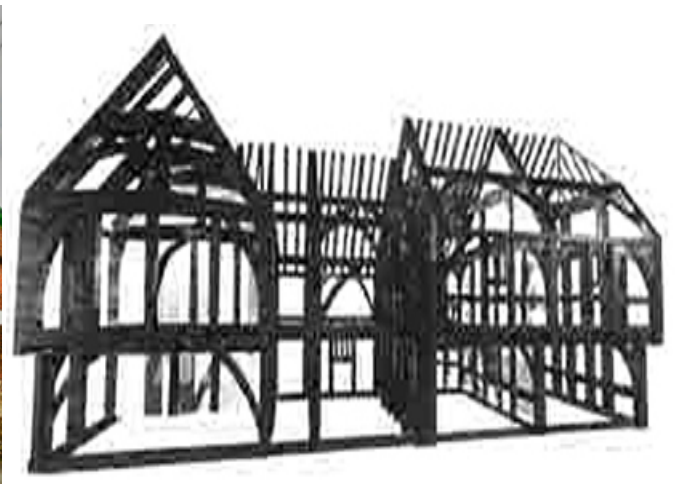




19 Swan Street



21/23 Swan Street



27 Swan Street



35 Swan Street



and now even numbers (West side)



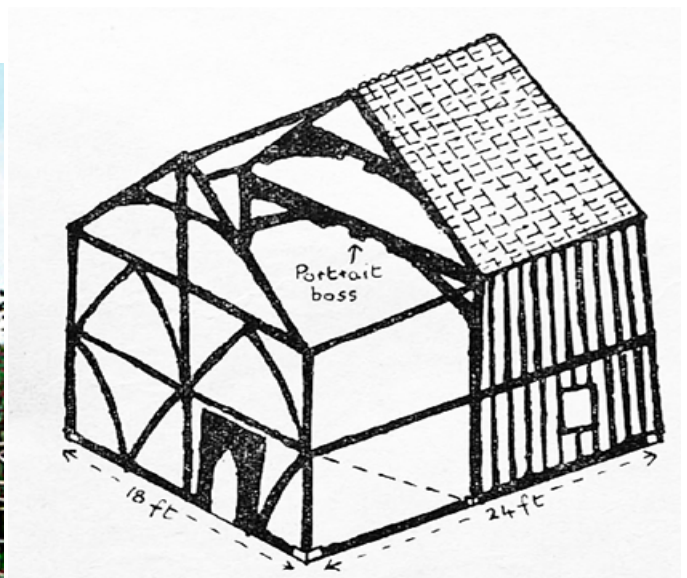
16 Swan Street



18 Swan Street



20 Swan Street



in1380



34 Swan Street



40 Swan Street



42 Swan Street



and what about Newbury Road?



1 Newbury Road, Falcon Inn



2 Newbury Road, Priory House



5 Newbury Road, Old Brewery House



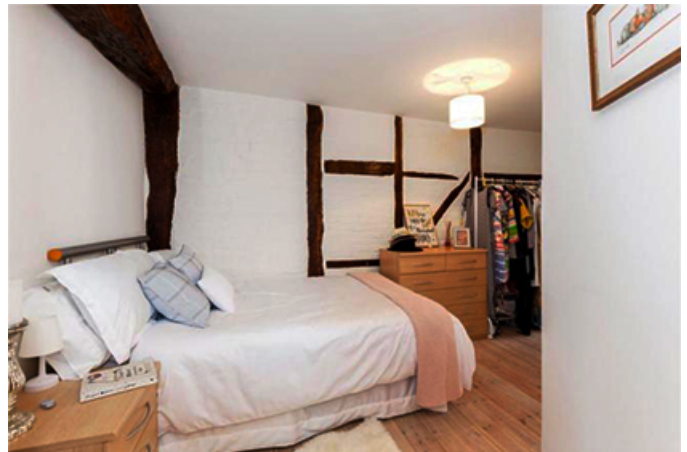
Now let's look at George Street
Which ones might be re-fronted?



2a George Street



2b George Street



3 George Street





7 George Street



8 George Street



14 George Street





18 George Street



27 George Street



and I have to include 3 & 5 North Street - 14th century!!!

