

## Kingsclere buildings past and present

Historic England website has 55 files on Kingsclere (not including detail of St. Mary's Church), comprising 151 black and white photos, probably from the 1930s.

So has Historic Kingsclere changed?

Here is a selection, alongside images that I have recent versions of  
How are things looking almost a century later?

Chris Watkins 2020

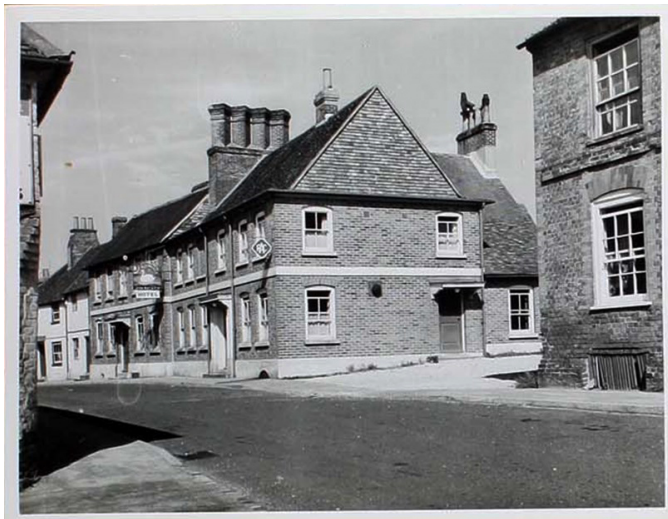
N=57



1, 1a 1b Swan Street



15 17 19 Swan Street'



19 Swan Street, Swan Hotel







21 and 23 Swan Street 14th cent (Warham House)



21 and 23 Swan Street



35, 37 and 39 Swan Street







6 8 10 Swan Street



16 14 Swan Street



18 Swan Street







20 Swan Street



22 Swan Street



24 Swan Street







26 Swan Street



30-32 Swan Street



34-38 Swan Street







42 Swan Street



46 Swan Street Bolton Arms



1&3 George Street







2-6 George Street



7 George Street



10-14 George Street Kingsclere Splicing Service







13 George Street (previously New Inn)



19 George Street



25-31 George Street







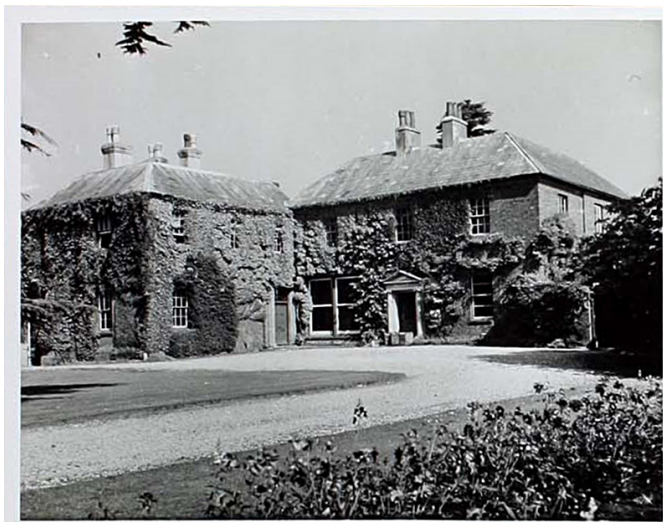
33 George Street



Hophead Inn



George & Horn



Elm Grove







3 and 5 North Street



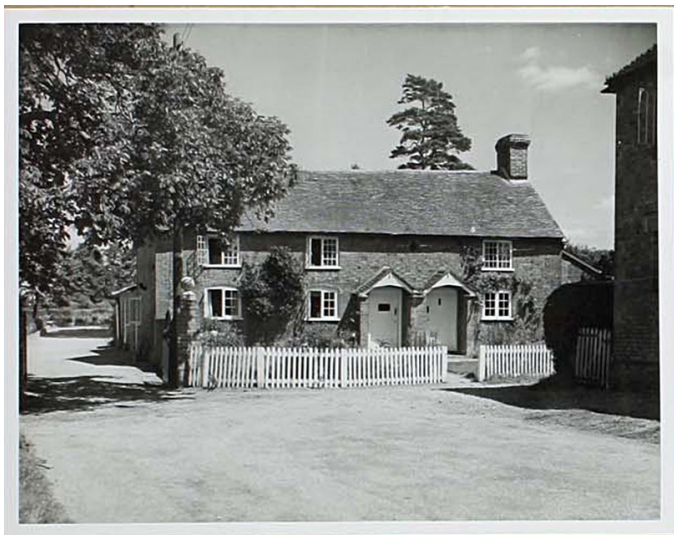
15, 19 and 21 North Street



23 North Street, Brooklyn House







30 & 32 North Street



Priors Mill front



Priors Mill rear







Priors Mill rear'



Kingsclere House



Falcon Inn barn







Falcon Inn Newbury Road



Falcon Inn



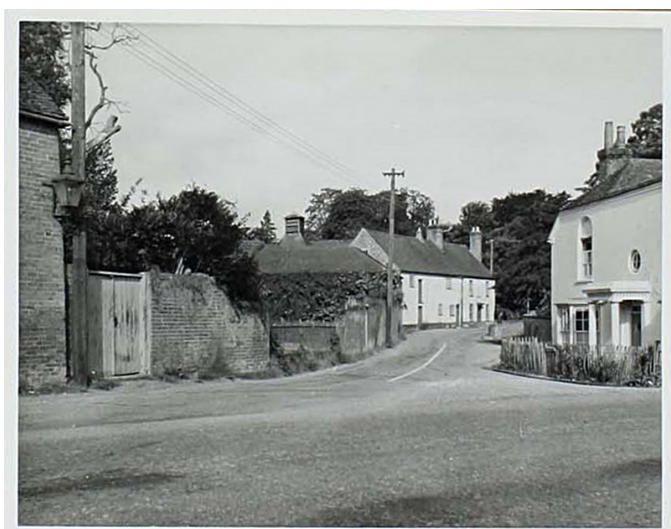
Old Brewery House, Falcon, Priory House







2 Newbury Road, Priory House



Old Brewery House & Town Mill



Old Brewery House







Brewery buildings



8, 10 and 12 Newbury Road, Tower Hill Cottages



7&9 Newbury Road





9 Newbury Road. The Old House



14 Newbury Road Tower Hill



16 Newbury Road







20 Newbury Road



?? Newbury Road, c1989 next to garage



Porch Farmhouse, Newbury Road rear







Porch Farmhouse, Newbury Road



Stanton's Farmhouse, Newbury Road barn



Stanton's Farmhouse, Newbury Road







Star Inn



Harriden's Farm, Union Lane



Upper House Farmhouse, Union Lane







White Cottages, Plastow, Union Lane

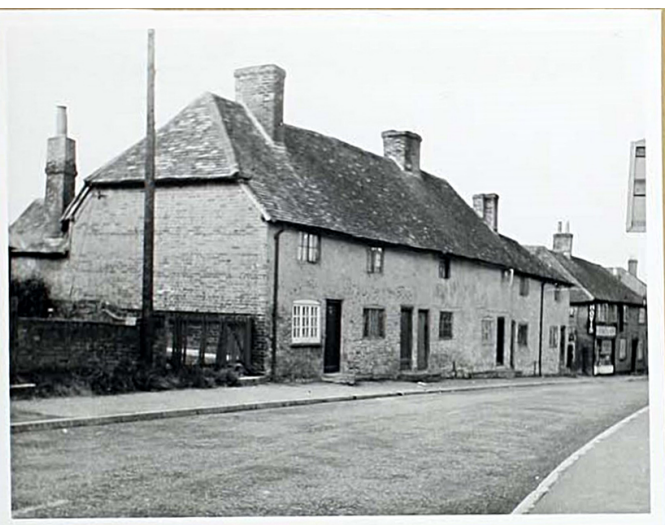


## Historic England images of buildings that have gone

N=4



17 George Street



24-30 George Street



Granary near Brewery



Tower Hill House