

Kingsclere - A village with 11 pubs!

(although not all at the same time)

(in alphabetical order)

The Anchor Inn

Chris Watkins, 2020



Photo from 1930s when it had been converted to Willcox butchers

1772 Samuel Rolfe died here. 1826 to 1876: mentions in Burials at St. Mary's Parish Church

Census: 1901: inn keeper: Daniel LAWRENCE (ex mole catcher) Census: 1911: Innkeeper (and Wood Dealer): Emma Knight

The Black Horse



1910



36 George Street, closed post 1918 and became Barton House

The Bolton Arms



1952



1952



According to a plaque on the wall of the house, the property belonged to Lord Bolton, Marquis of Winchester, the Dukes of Bolton being the lords of the manor. George Thumbwood was its landlord “Retailer of Beer & Hay Binder” in 1871 and he was still there in 1890. By 1920 Mark Bennett was in residence and Daniel Hussey stayed until the public house closed in 1953.

Crown Hotel



1960



C17, late C19. . A Victorian-Tudor refronting of former 3 cottages, of timber-framed origin. The modern Crown Inn was built in 1853.

The Falcon



1950s



1930



Held traditionally to occupy the site of that in which King John's falconer lived
One time in the possession of William Warham, Archbishop of Canterbury, who in 1510 gave it to Winchester College
Mentioned in the parish register in 1611 and 1628.
Falcon Inn until 1952

George and Horn



1989



2011



Site of the old Crown Inn which dates back to 1611 and retained that name on the site in 1725. Renamed probably before 1796.
Named Hophead Inn in 1930s. The oak beams came from sailing ships

New Inn



1998



1905

13 George Street - found in 1998 when a property undergoing restoration revealed the name of The New Inn painted on the front wall

The Star



1930s

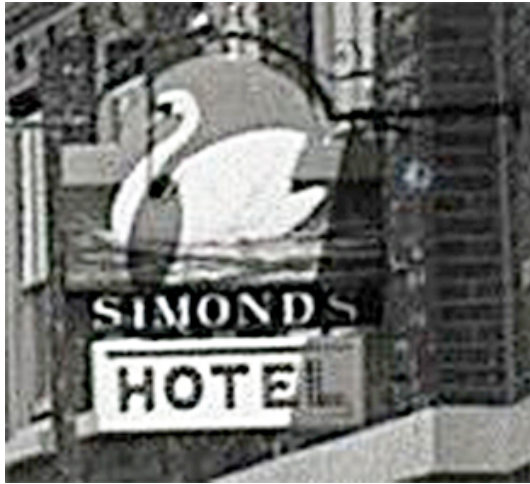


1930s



built around 1847. The Star used to have 40 acres of farmland with it when built this was sold by Lord Bolton in 1923. Jonas Holyoak was publican before Bill Plaice took over during the 1930's when he served the beer direct from the cellars. He retired in 1948 and it was probably soon after this that the farm was sold separately from the Pub

The Swan Hotel



1952



1962

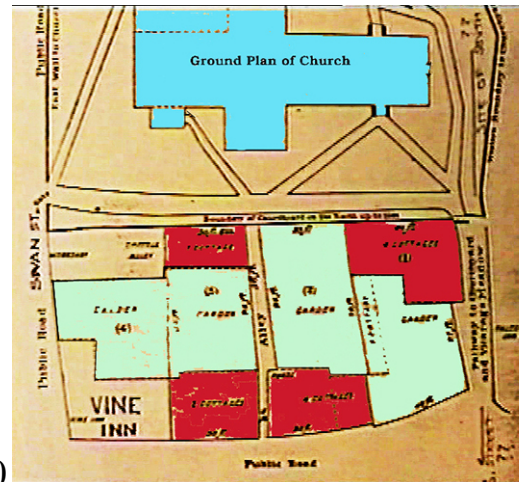


Records dating from 1485 when the land was purchased by Winchester College During recent renovations some of the exposed timbers were dendrodated to 1448

The Vyne



1810



On the site of the War Memorial in the present churchyard. Demolished in 1885 and the land added to the churchyard.

The Bear Inn

probably at the end of Swan Street at the bottom of Bear Hill

No illustrations